

## Wildlife Health Centre

The following activities are intended to be used as a follow-up to the virtual tour of the Toronto Zoo's Wildlife Health Centre.

### **ACTIVITY ONE – Top Trumps**

You have learned about how the Toronto Zoo works hard to ensure that the animals all get a healthy, balanced diet. Use the card game below to learn about different food groups we can find in our diets.

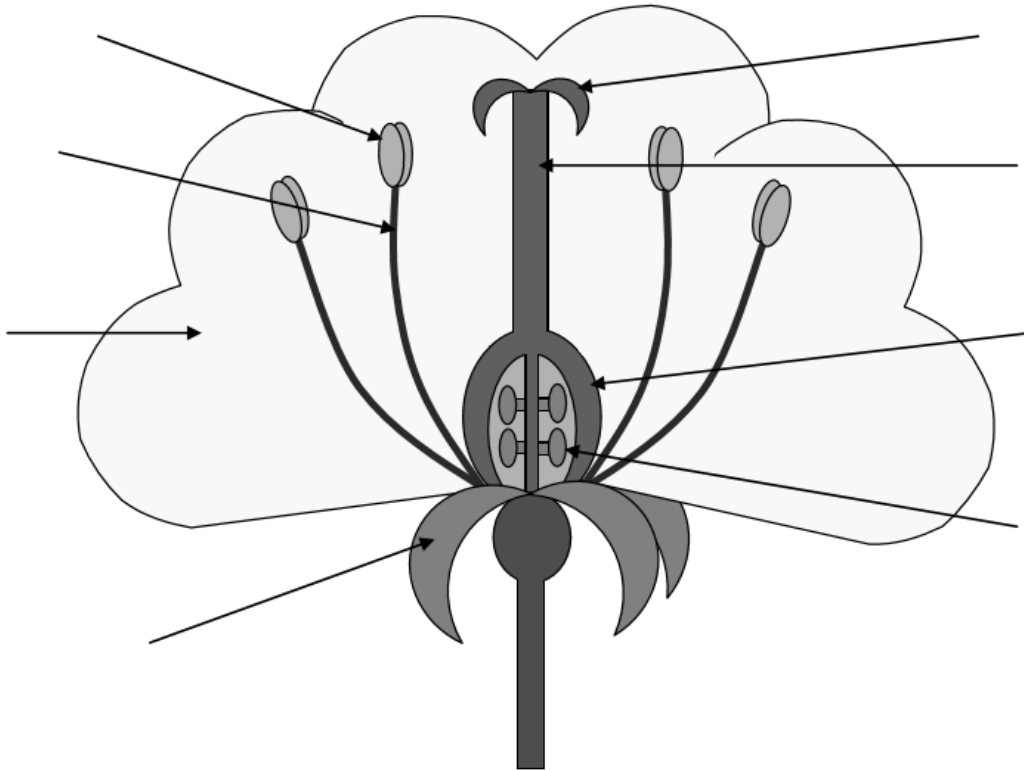
#### **Card game for 2 players**

##### **Instructions:**

- Print off and cut out one copy of the Top Trump Cards.
- Divide the cards between the two players.
- The players hold their cards with the top card facing them.
- The youngest player goes first - they pick a nutrient/food group on their card that they think has a high value. They will then say for example “Calcium 14%” if the other player has a lower value for calcium, on their first card they have to give it to the other player. If the other player has a higher value than 14, they take the first player's card.
- The second player then gets to go first, following the steps above.
- The winner is the person who gets all of the other player's cards.

## ACTIVITY Two – Flower Diagram

You got an up-close look at the amazing plant collection the Toronto Zoo has. Conduct some research of your own to correctly label the parts of the flower below.



### Word Bank

Sepal	Stigma	Filament	Anther
Ovary	Petal	Style	Ovule

## ACTIVITY THREE- Become a Volunteer

While touring the Toronto Zoo's Wildlife Health Center you learned about the Volunteers who work every day to help our guests have the best experience possible. One part of their job is to be stationed near or around animal exhibits, letting the public know facts about the animals, the Zoo's events and conservation programs they can get involved with. Your task is to research an animal or section of the Zoo and create and deliver a Volunteer presentation, just like you would if you were at the Zoo! You are encouraged to make and use biofacts to help communicate your information to your audience.

Remember a biofact is a biological artefact, for the Zoo this could be a skull, feathers, or claws collected from past animals, or a bone clone (a fake skull, that looks exactly like the real one). Take a look back in previous videos to see if you can spot all the biofacts that are used. Put your arts and crafts to work and try and create your own biofacts!

Before your start, be sure to make your self a nametag so your audience will know who you are!

TZ Junior Volunteer Name: \_\_\_\_\_

Photo ID



Age: \_\_\_\_\_

Favourite

Animal: \_\_\_\_\_

\_\_\_\_\_

Favourite Area of the

Zoo: \_\_\_\_\_

\_\_\_\_\_

## Answers

